

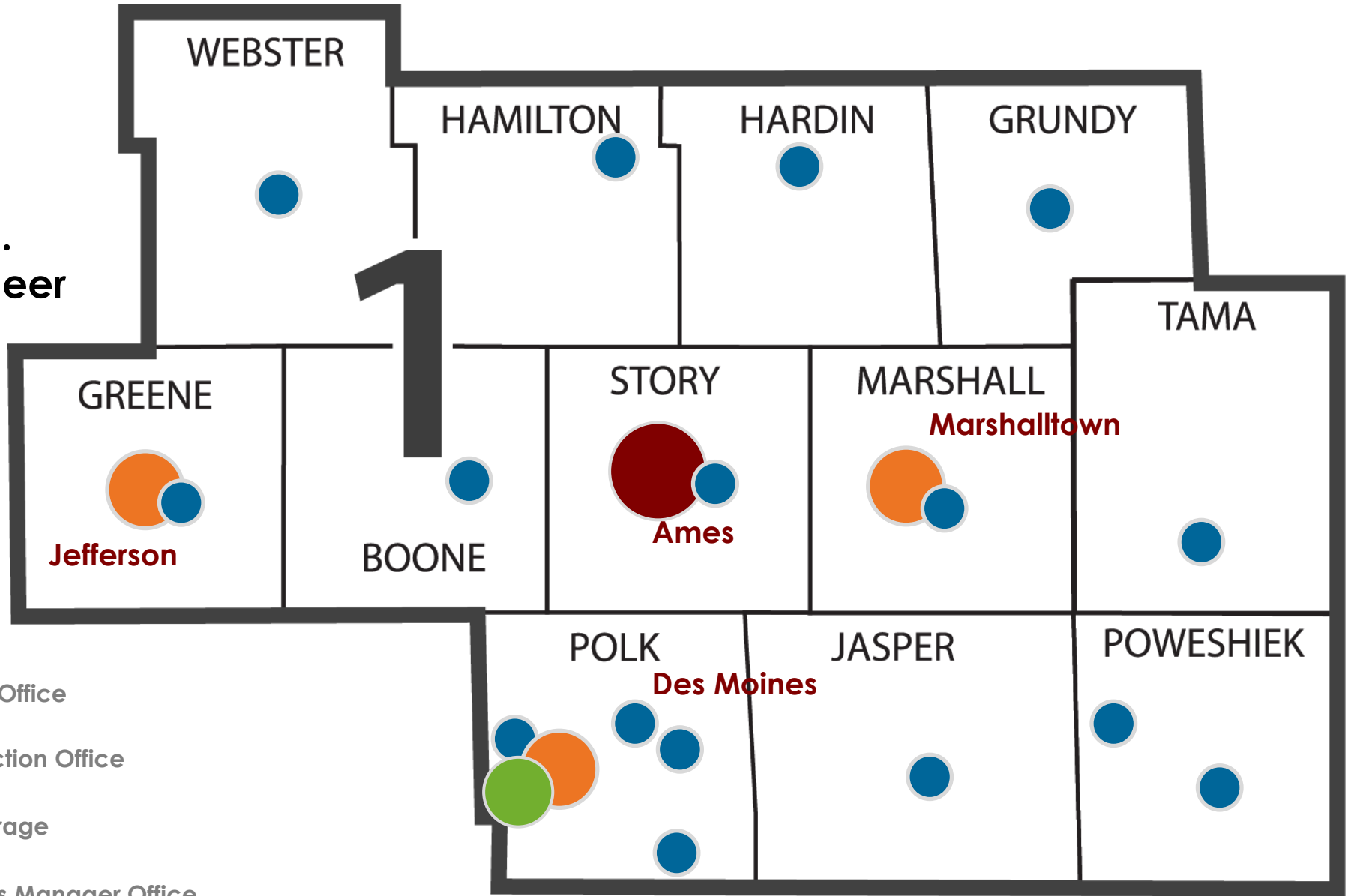
# District 1 Projects





# DISTRICT 1

Jeremy Vortherms, P.E.  
Assistant District 1 Engineer



-  Iowa DOT District Office
-  Resident Construction Office
-  Maintenance Garage
-  District Operations Manager Office

# DISTRICT 1 ENGINEERING STAFF

**ALLISON SMYTH, P.E.**  
**DISTRICT 1 ENGINEER**

**JEREMEY VORTHERMS, P.E.**  
**ASSISTANT DISTRICT 1 ENGINEER**

**SCOTT NIXON, P.E.**  
**DISTRICT 1 CONSTRUCTION ENGINEER**

**ANDY SWISHER, P.E.**  
**TRANSPORTATION SYSTEMS MANAGEMENT &  
OPERATIONS ENGINEER**

**FRANK LEONG, P.E.**  
**RCE– GRIMES**

**JENNY HOSKINS, P.E.**  
**RCE– JEFFERSON**

**DUSTIN SKOGERBOE, P.E.**  
**RCE– MARSHALLTOWN**

**MIKE LAURITSEN, P.E.**  
**DISTRICT 1 MATERIALS ENGINEER**

# District 1 - 2024-2028 Iowa Highway Program

(as approved by the Iowa Transportation Commission June 13, 2023)

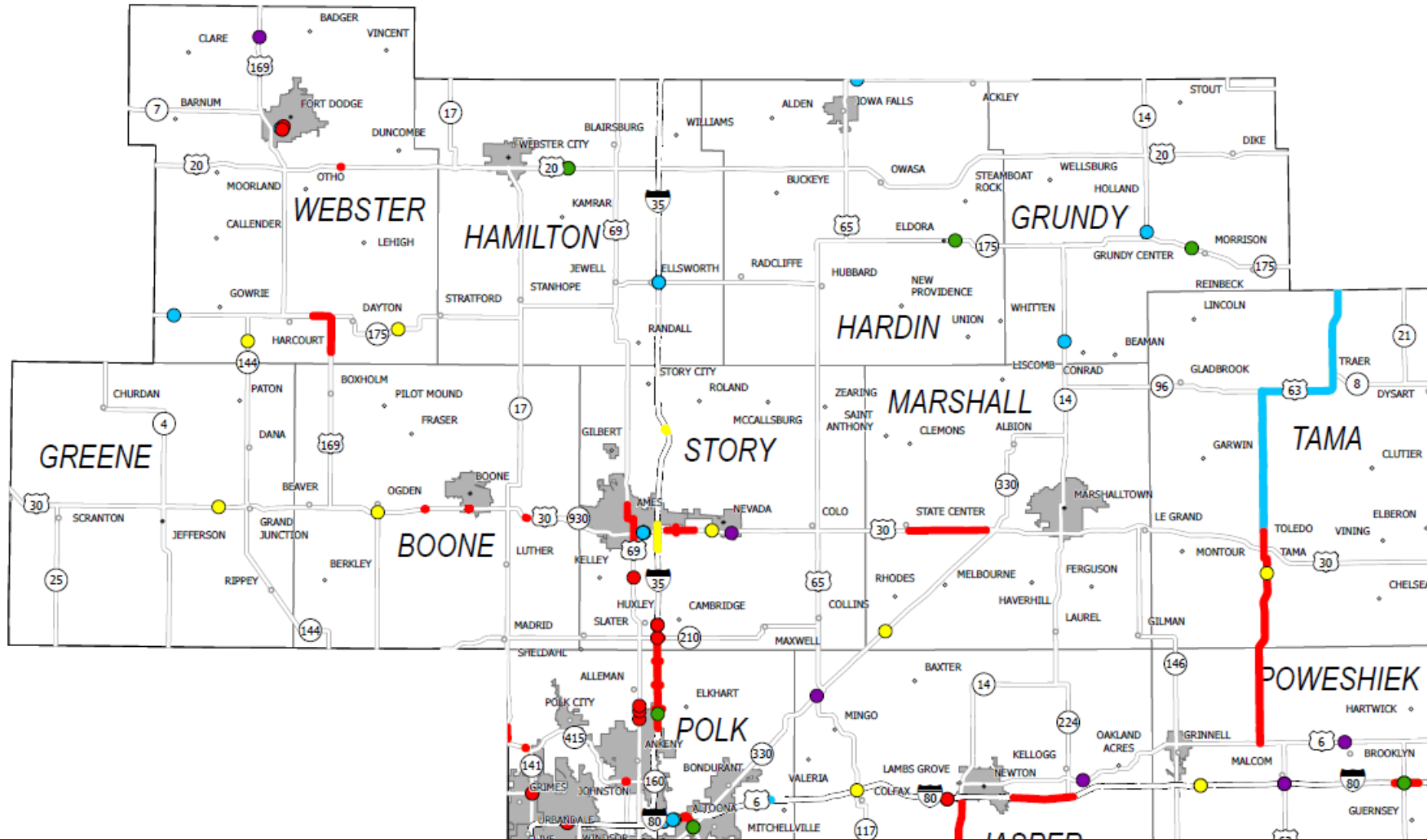
# IOWA

STATE HIGHWAY MAP

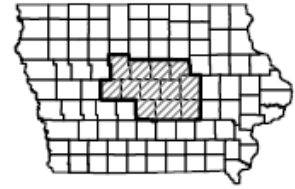


**Structure Highway**

- 2024
- 2025
- 2026
- 2027
- 2028



Allison Smyth, P.E.  
 District 1 Engineer  
 1020 S. Fourth St.,  
 Ames, IA 50010  
 515-239-1430

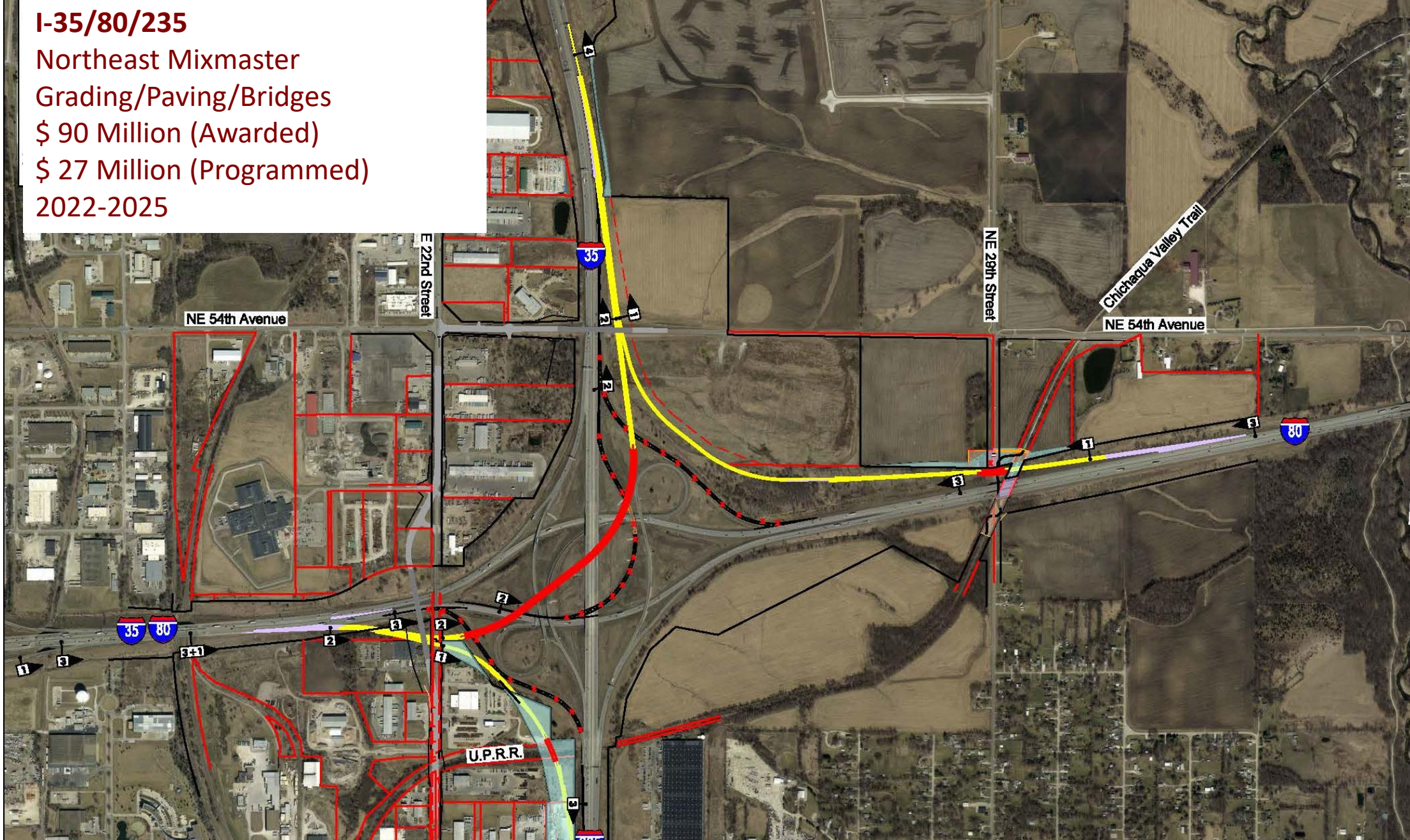


- Notes:
- May not include minor right of way, erosion control, patching, bridge washing or other minor projects
  - Only the first year of multi-year projects is shown
  - Most safety and non-interstate pavement resurfacing projects are identified for only the first year. Therefore, few projects of that type are shown for years 2025 through 2028
  - Map is subject to change and is not to scale



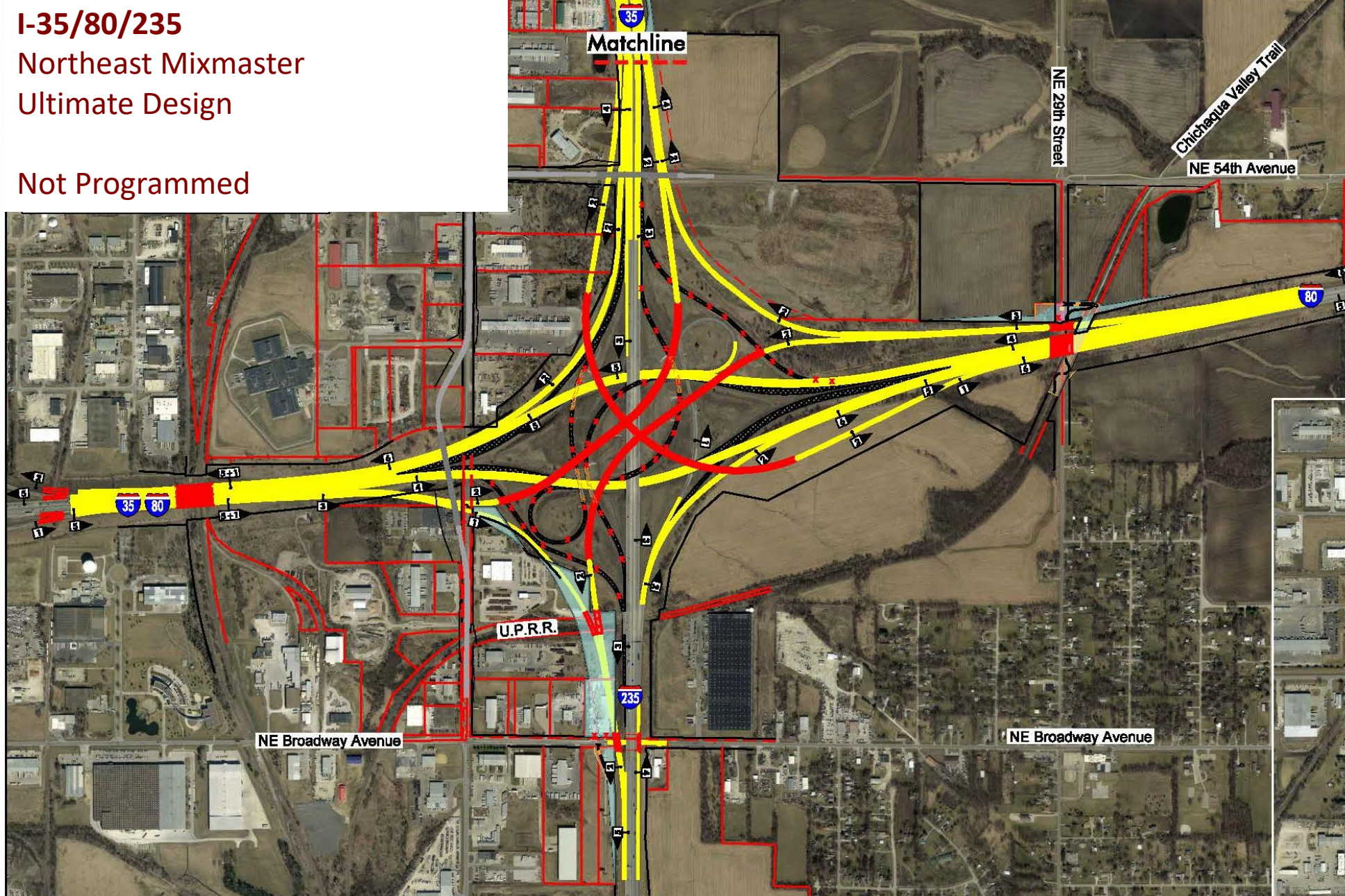


**I-35/80/235**  
Northeast Mixmaster  
Grading/Paving/Bridges  
\$ 90 Million (Awarded)  
\$ 27 Million (Programmed)  
2022-2025



# I-35/80/235 Northeast Mixmaster Ultimate Design

Not Programmed





### **I-35 Capacity Improvements**

Ankeny to Huxley

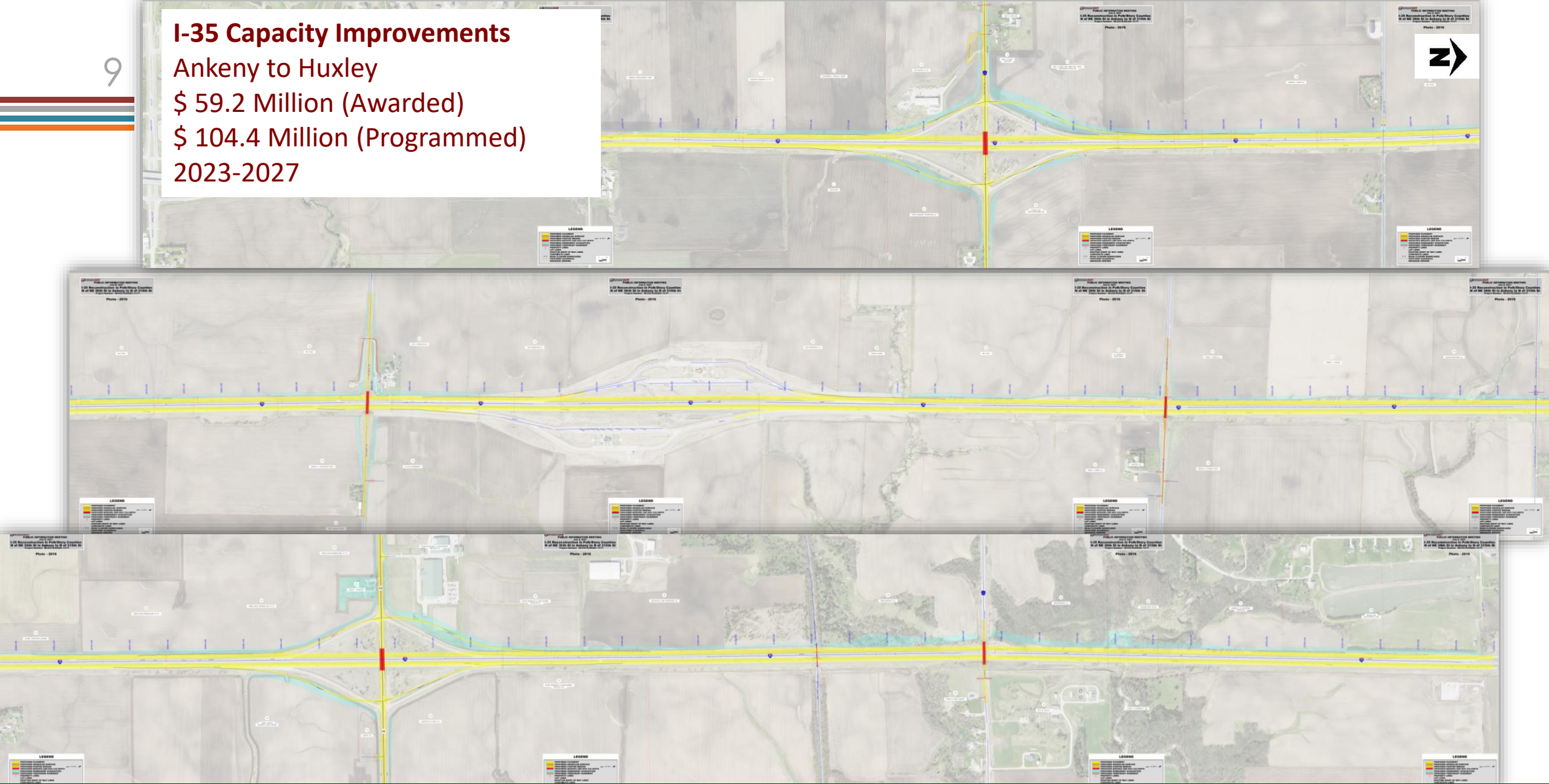
\$ 59.2 Million (Awarded)

\$ 104.4 Million (Programmed)

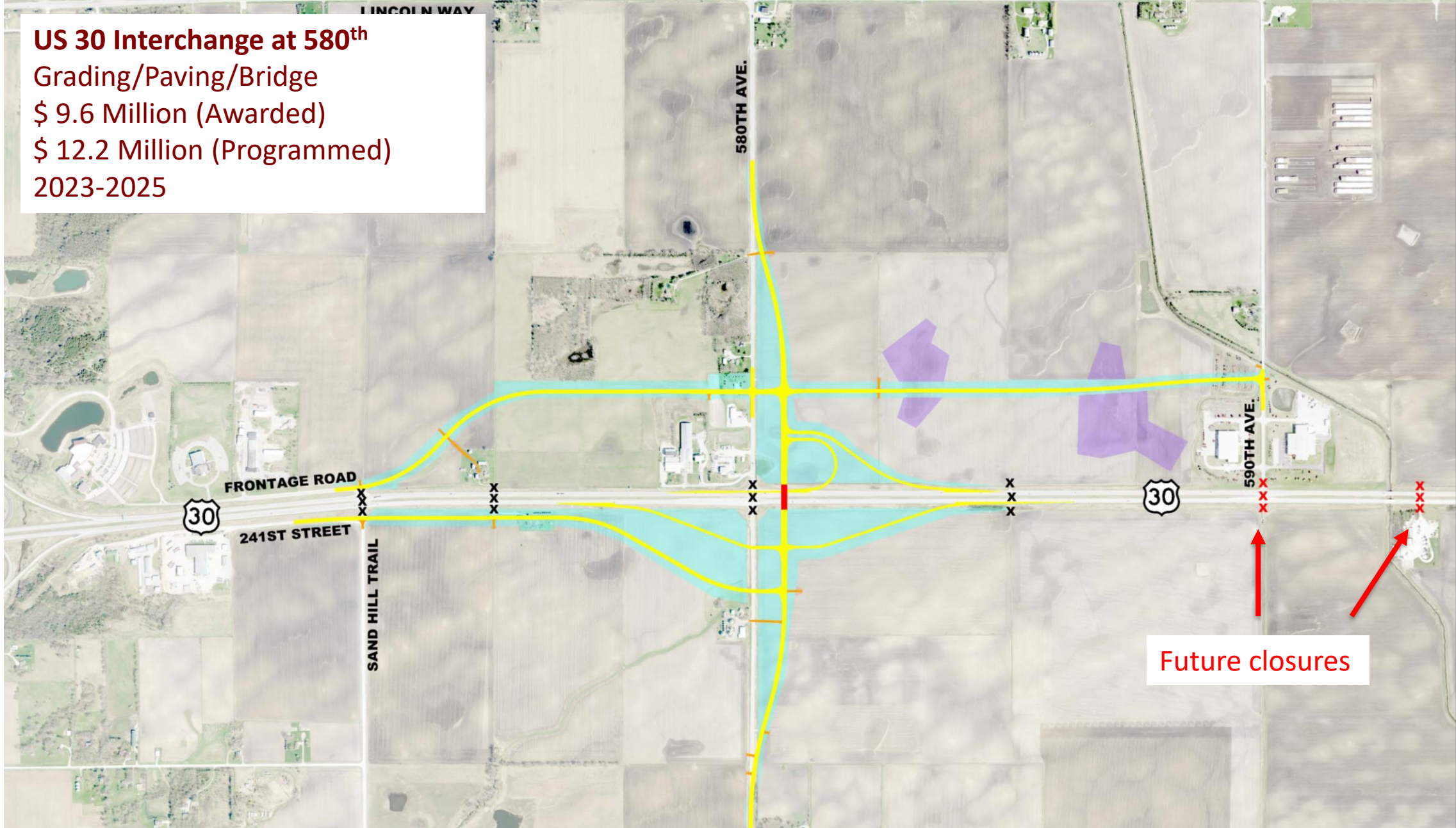
2023-2027



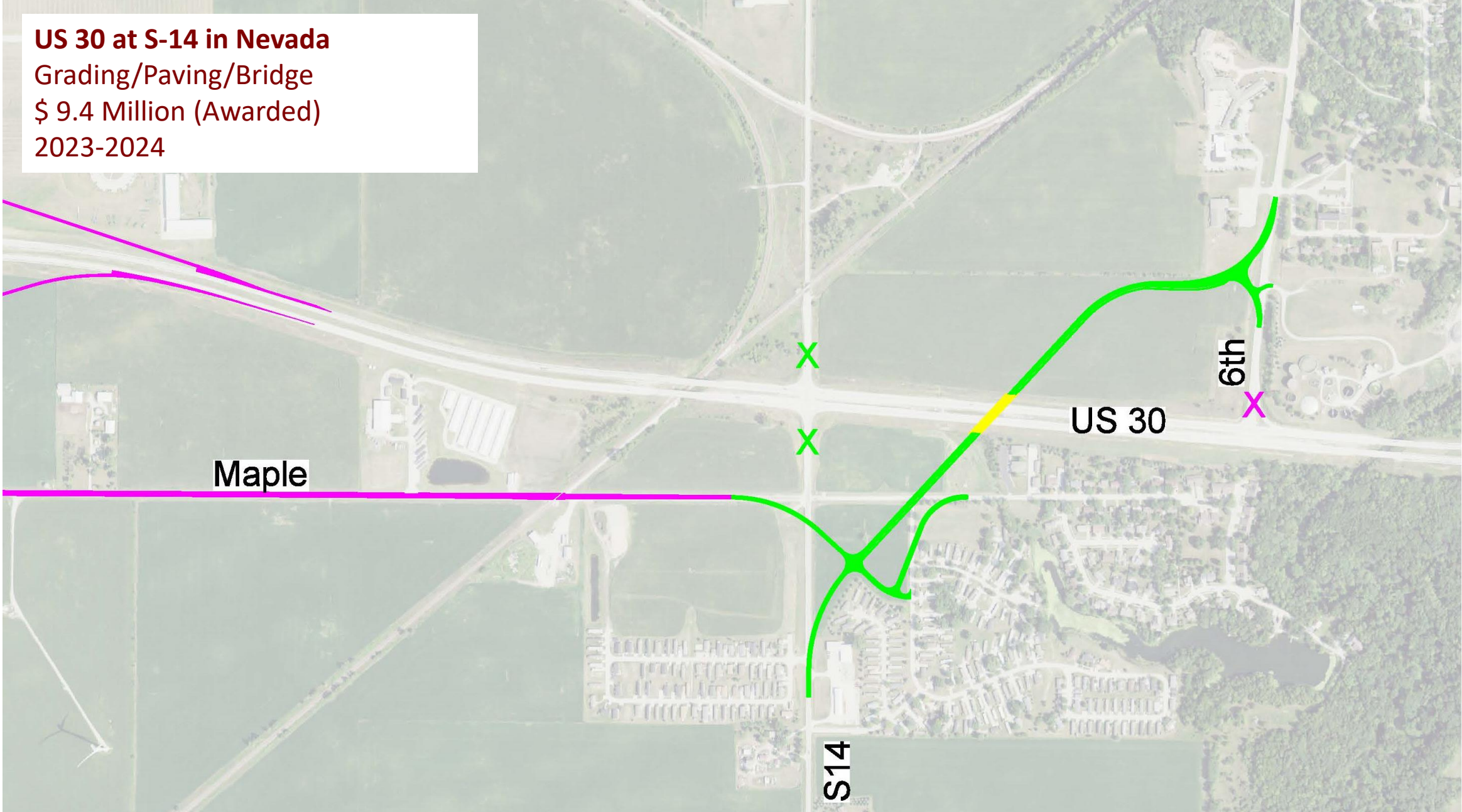
**I-35 Capacity Improvements**  
Ankeny to Huxley  
\$ 59.2 Million (Awarded)  
\$ 104.4 Million (Programmed)  
2023-2027



**US 30 Interchange at 580<sup>th</sup>**  
Grading/Paving/Bridge  
\$ 9.6 Million (Awarded)  
\$ 12.2 Million (Programmed)  
2023-2025



**US 30 at S-14 in Nevada**  
Grading/Paving/Bridge  
\$ 9.4 Million (Awarded)  
2023-2024



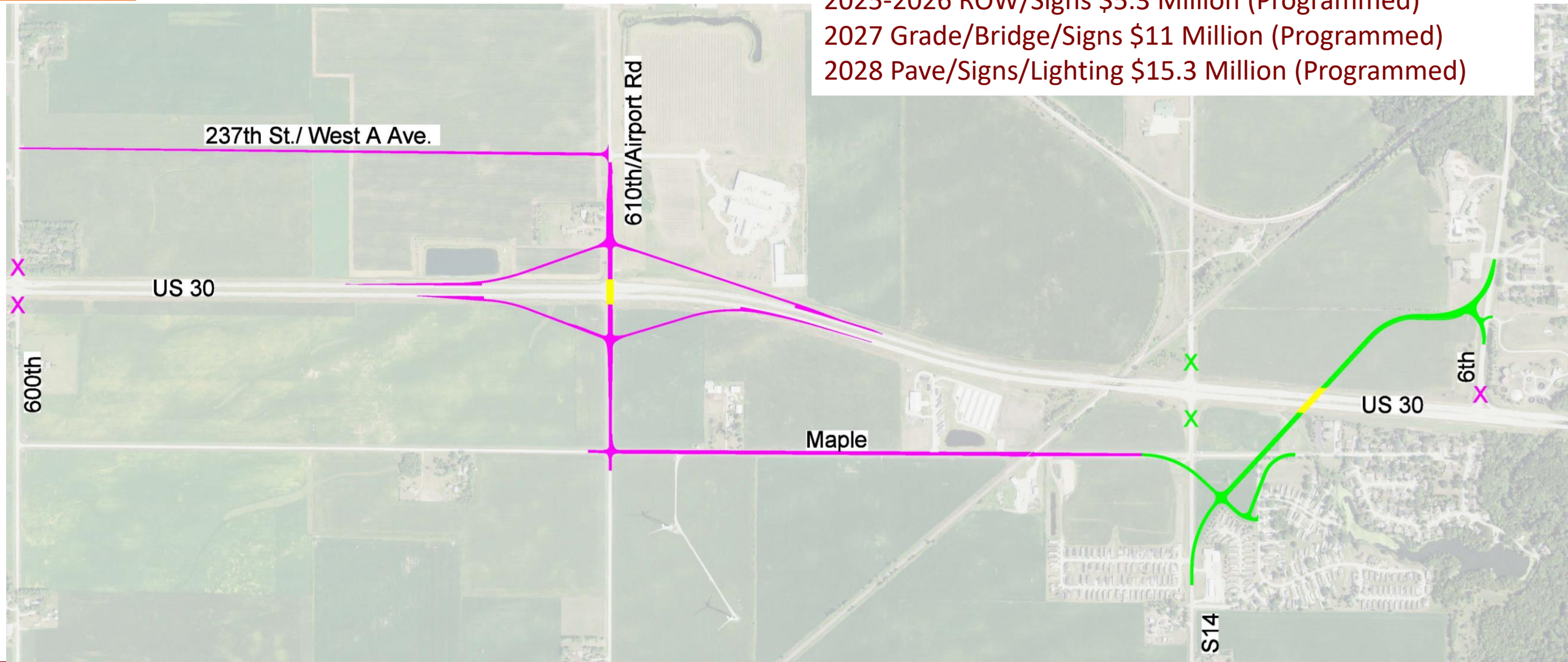
### US 30/ 610<sup>th</sup> Ave in Nevada

New Interchange

2025-2026 ROW/Signs \$5.3 Million (Programmed)

2027 Grade/Bridge/Signs \$11 Million (Programmed)

2028 Pave/Signs/Lighting \$15.3 Million (Programmed)



### US 30 in Ames

Skunk River Bridge Replacements  
Grade/Pave/Bridge/Signs/Lighting

2025 \$4.5 Million (Programmed)

2026 \$16.2 Million (Programmed)

2027 \$14.1 Million (Programmed)



### I-35 Ankeny to Ames Capacity Improvements

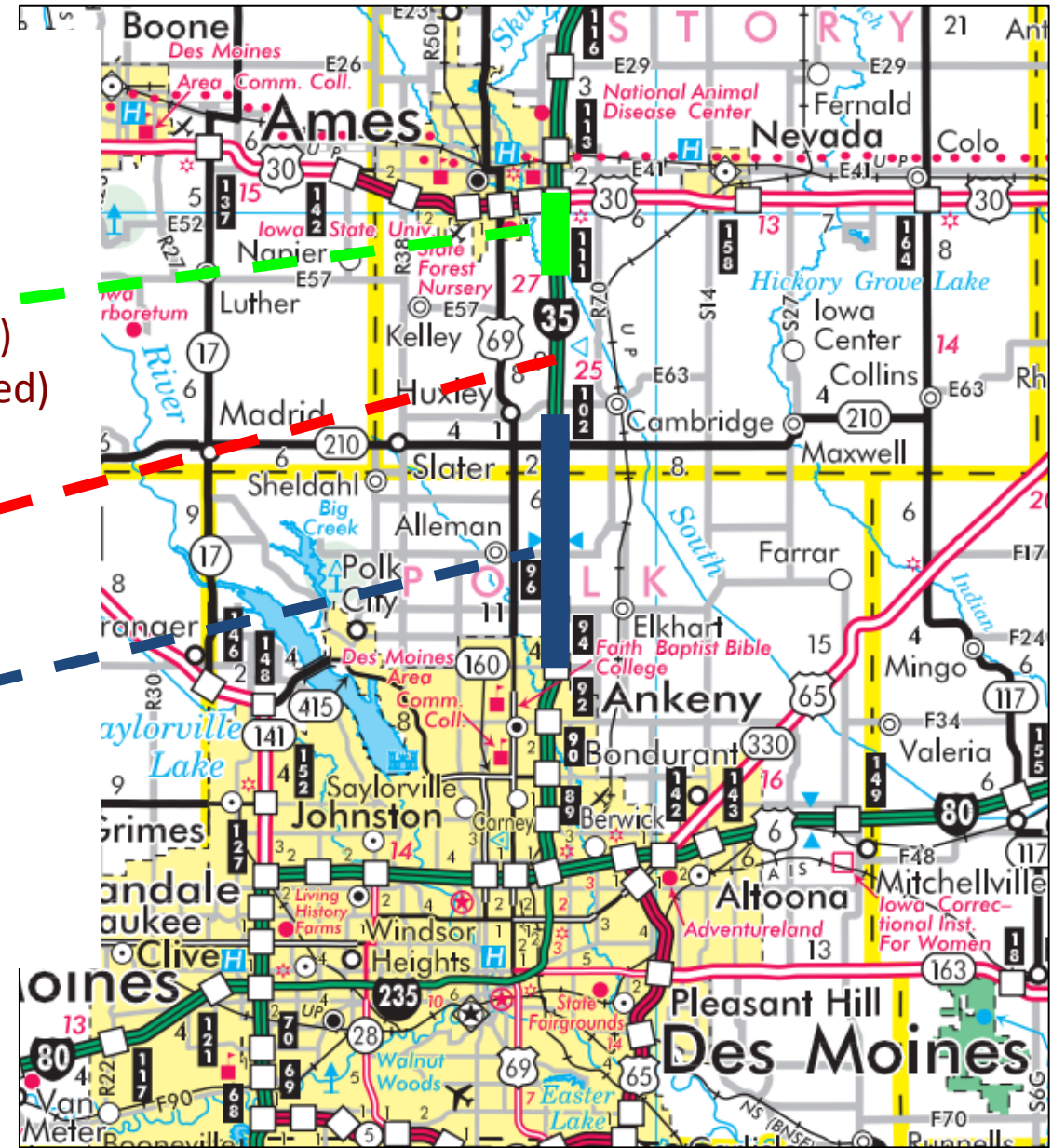
#### E-57 to North of US 30

- 2027 ROW \$5.2 Million (Programmed)
- 2028 Grade/Pave/Signs \$ 11.1 Million (Programmed)
- 2029+ Grade/Pave/Bridge \$57.5 Million (Unprogrammed)

#### Huxley to E-57 (Unprogrammed)

#### Ankeny to Huxley

- \$ 59.2 Million (Awarded)
- \$ 104.4 Million (Programmed)
- 2023-2027

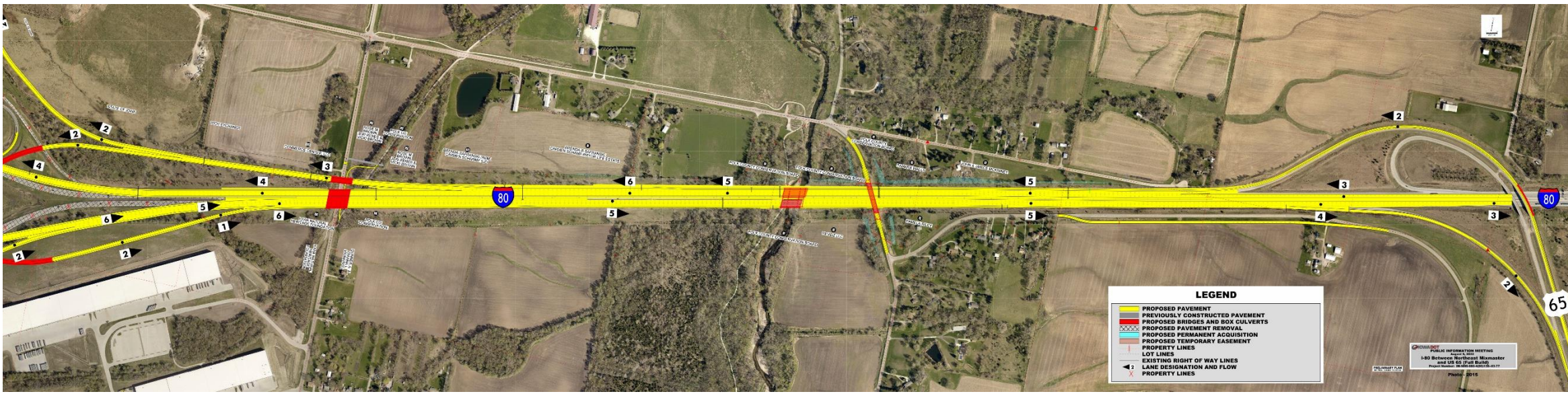
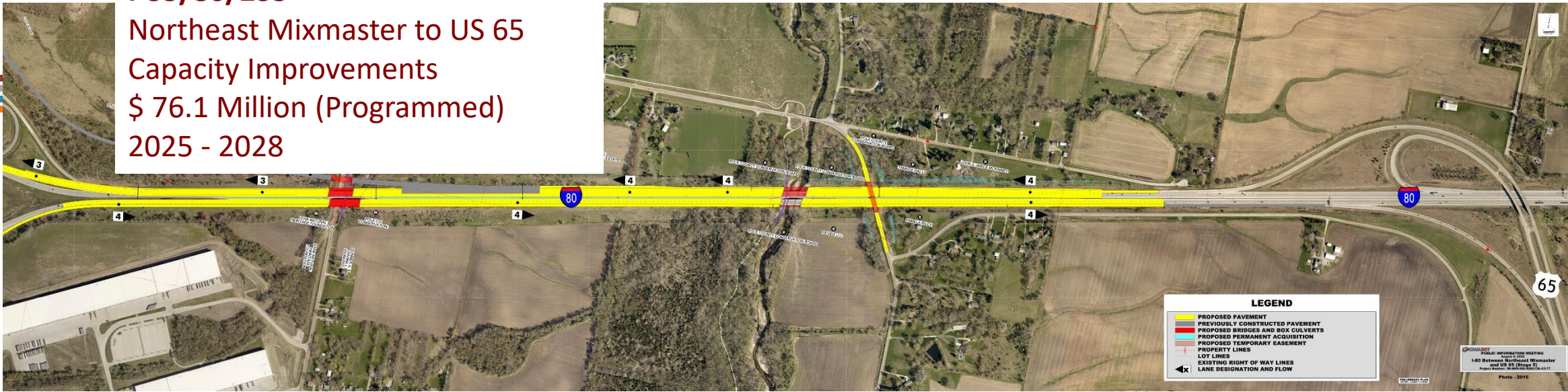


# I-35/80/235

## Northeast Mixmaster to US 65

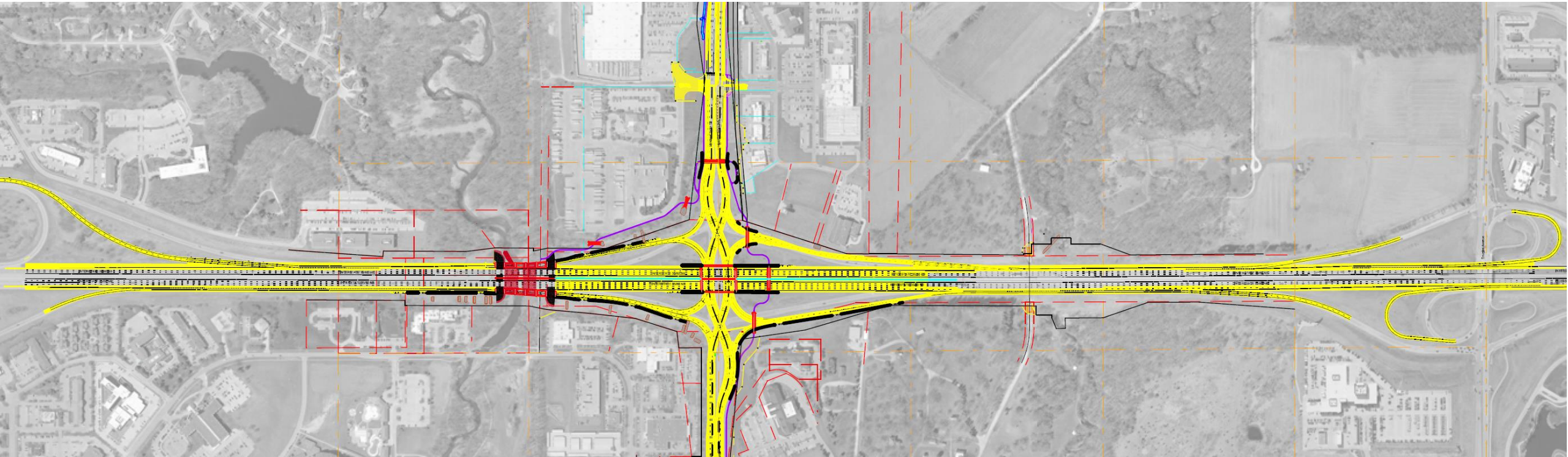
### Capacity Improvements

\$ 76.1 Million (Programmed)  
2025 - 2028



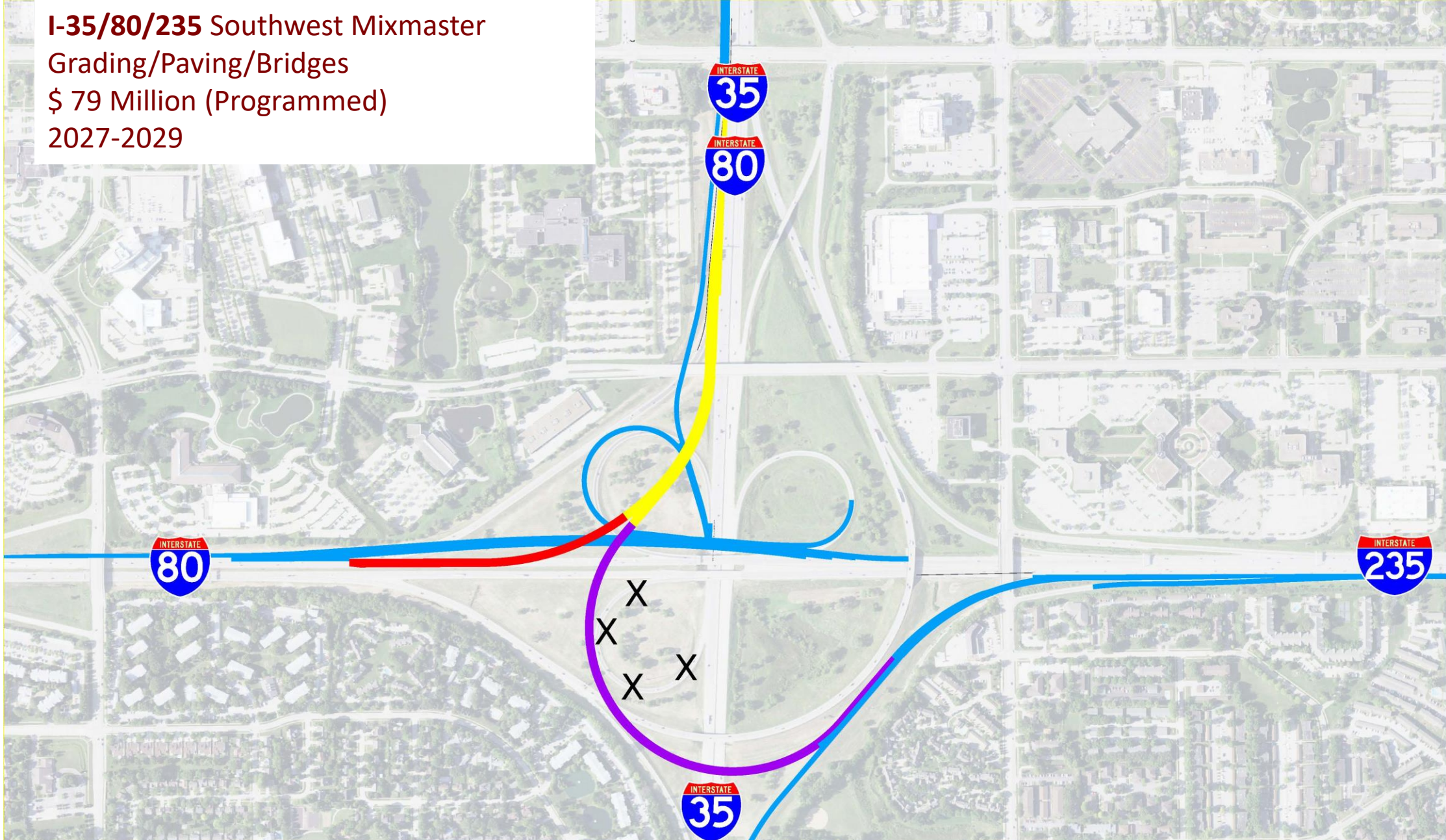
**I-35/80 & US 6 (Hickman)**  
Interchange Reconstruction  
\$ 6.1 Million ROW (Programmed)  
\$ 93.8 Million Construction (Programmed)  
2025 - 2028

NOT TO SCALE



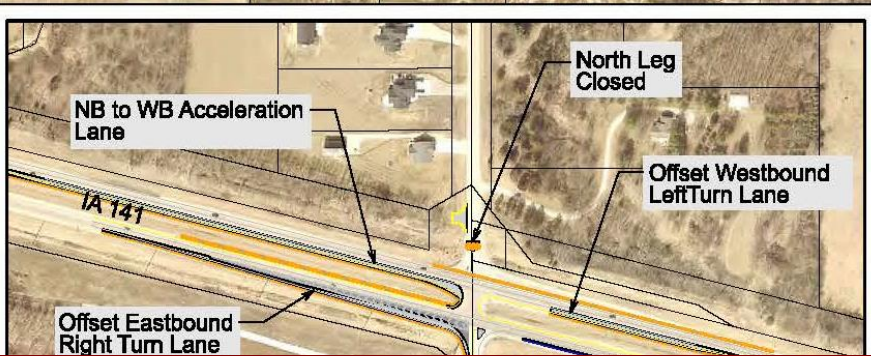
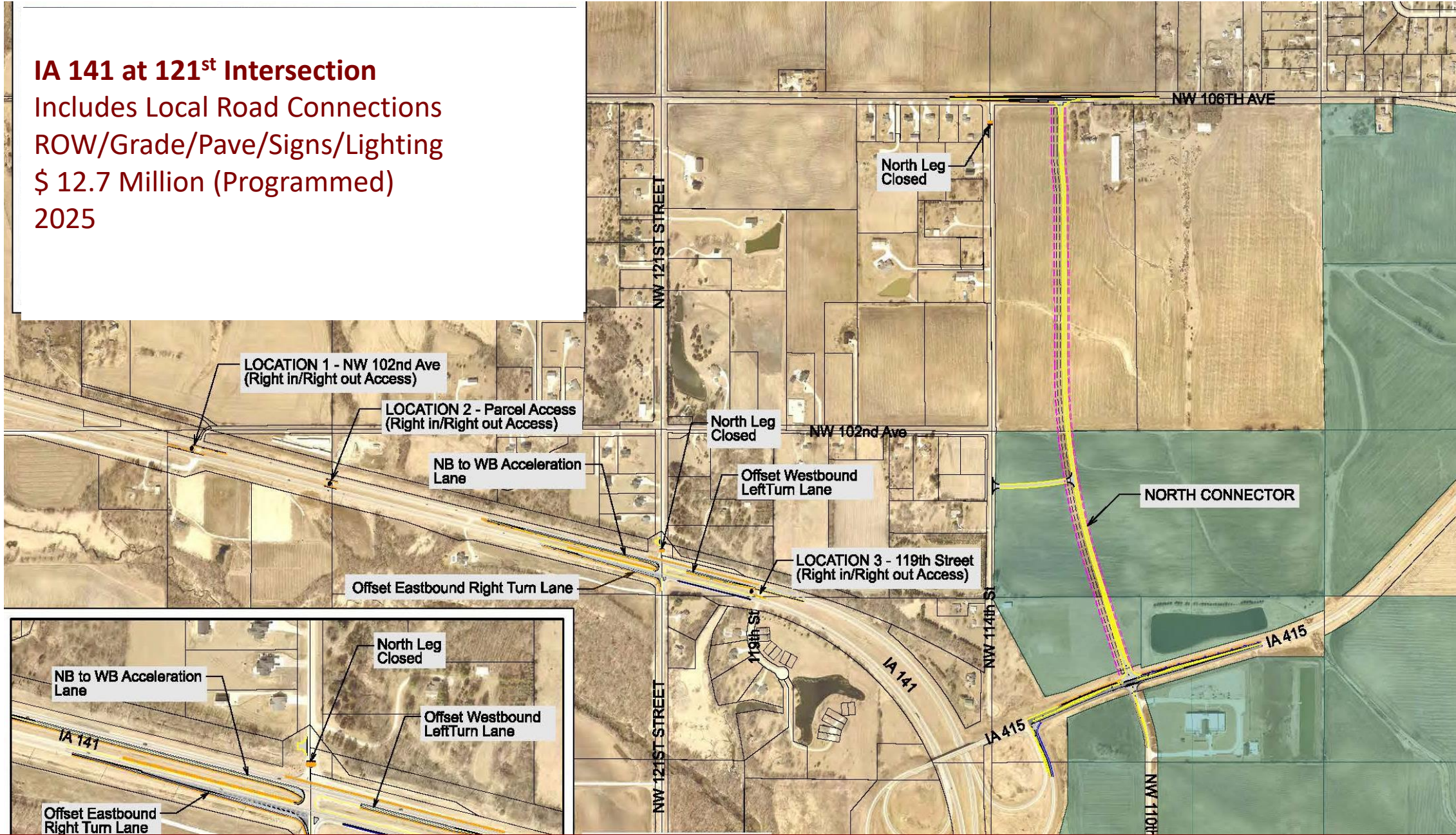


**I-35/80/235 Southwest Mixmaster**  
Grading/Paving/Bridges  
\$ 79 Million (Programmed)  
2027-2029



### IA 141 at 121<sup>st</sup> Intersection

Includes Local Road Connections  
ROW/Grade/Pave/Signs/Lighting  
\$ 12.7 Million (Programmed)  
2025



**US 69**

Maury Street Intersection Reconstruction  
Paving \$1.3 Million (Programmed)  
2025

Des Moines River Bridge Replacement  
Bridge \$21 Million (Programmed)  
2027





**IA 175 in Webster County**  
Des Moines River Bridge Replacement

ROW/Bridge  
\$12.9 Million (Programmed)  
2027



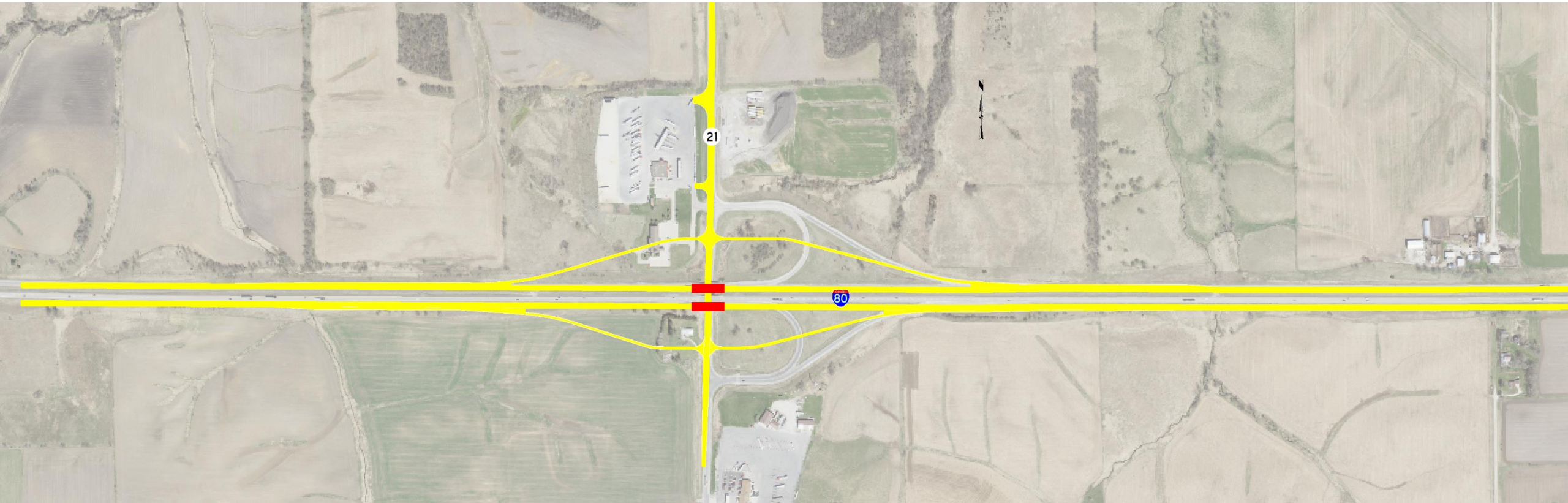
## I-80 at IA 21 in Poweshiek County

Interchange Reconstruction

2024-2025 ROW/ \$2.1 Million (Programmed)

2027 Grade/Bridge/Signs \$11 Million (Programmed)

2028 Pave/Signs/Lighting \$15.3 Million (Programmed)



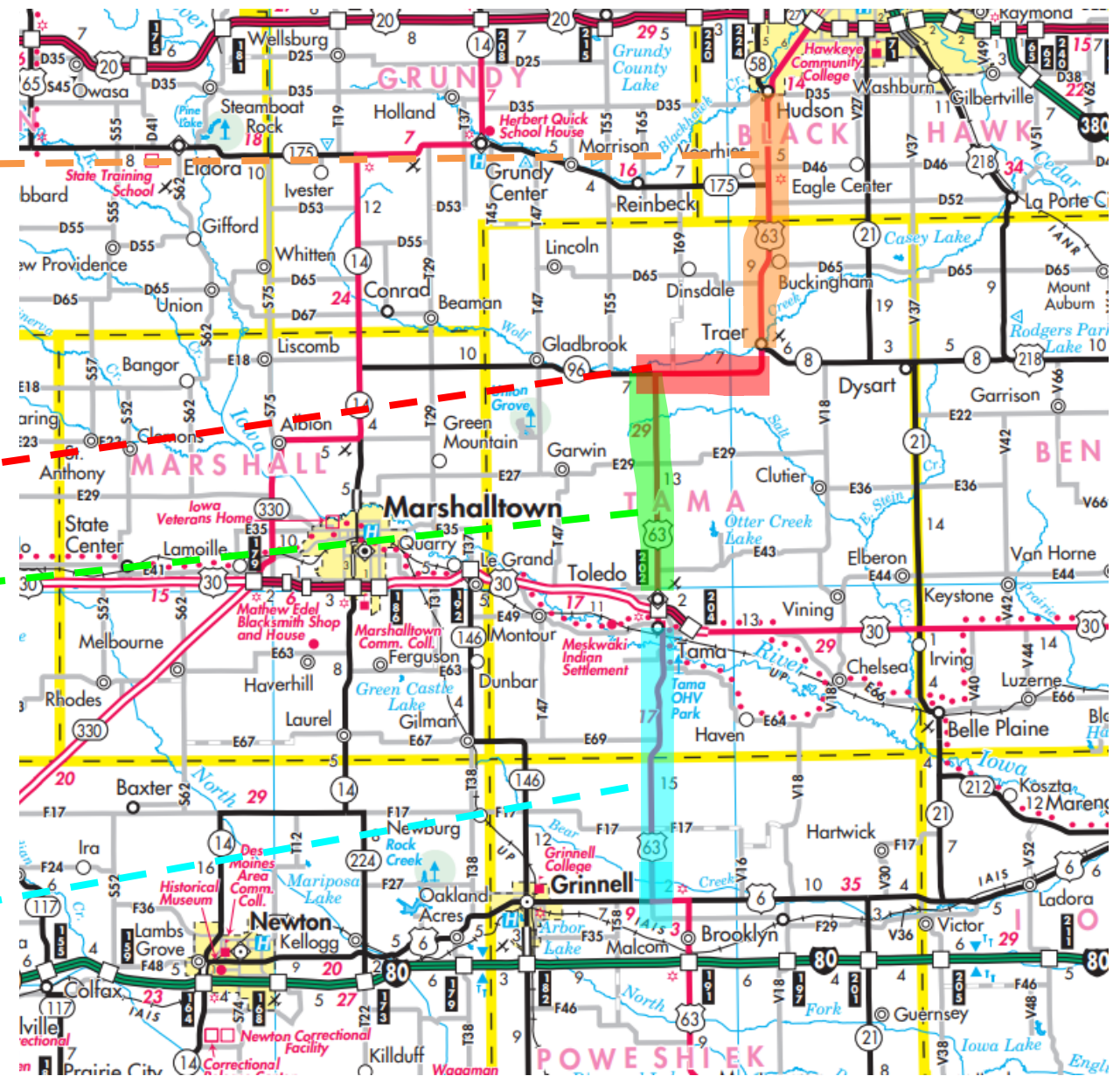
# US 63 – US 6 to Hudson Super 2 Improvements

Traer to Hudson  
2025 ROW  
\$600,000 (Programmed)  
2027 Grade/Pave/Signs  
\$12.1 Million (Programmed)

IA 96 to Traer  
(Future--Unprogrammed)

Toledo to IA 96  
2025 ROW  
\$6.0 Million (Programmed)  
2026 Grade/Pave/Signs  
\$15.3 Million (Programmed)

US 6 to Tama  
2024 ROW/Grade/Pave  
\$21.1 Million (Programmed)





THANK YOU FOR YOUR TIME AND ATTENTION

Jeremey Vortherms  
Assistant District 1 Engineer  
District 1 Office  
1020 S. 4<sup>th</sup> Street Ames, IA 50010  
[Jeremey.Vortherms@iowadot.us](mailto:Jeremey.Vortherms@iowadot.us)  
515-233-7851